

Cleopatra Enterprise Software highlights



cleopatra
ENTERPRISE

Cost Engineering

Version : 1.0

Content

1	Introduction.....	3
2	Common features	3
3	Estimating	5
4	Workflow.....	6
5	Interfacing	7
6	Web sharing	8
7	Plugins	9
8	Future modules.....	10

1 Introduction.

Cleopatra Enterprise

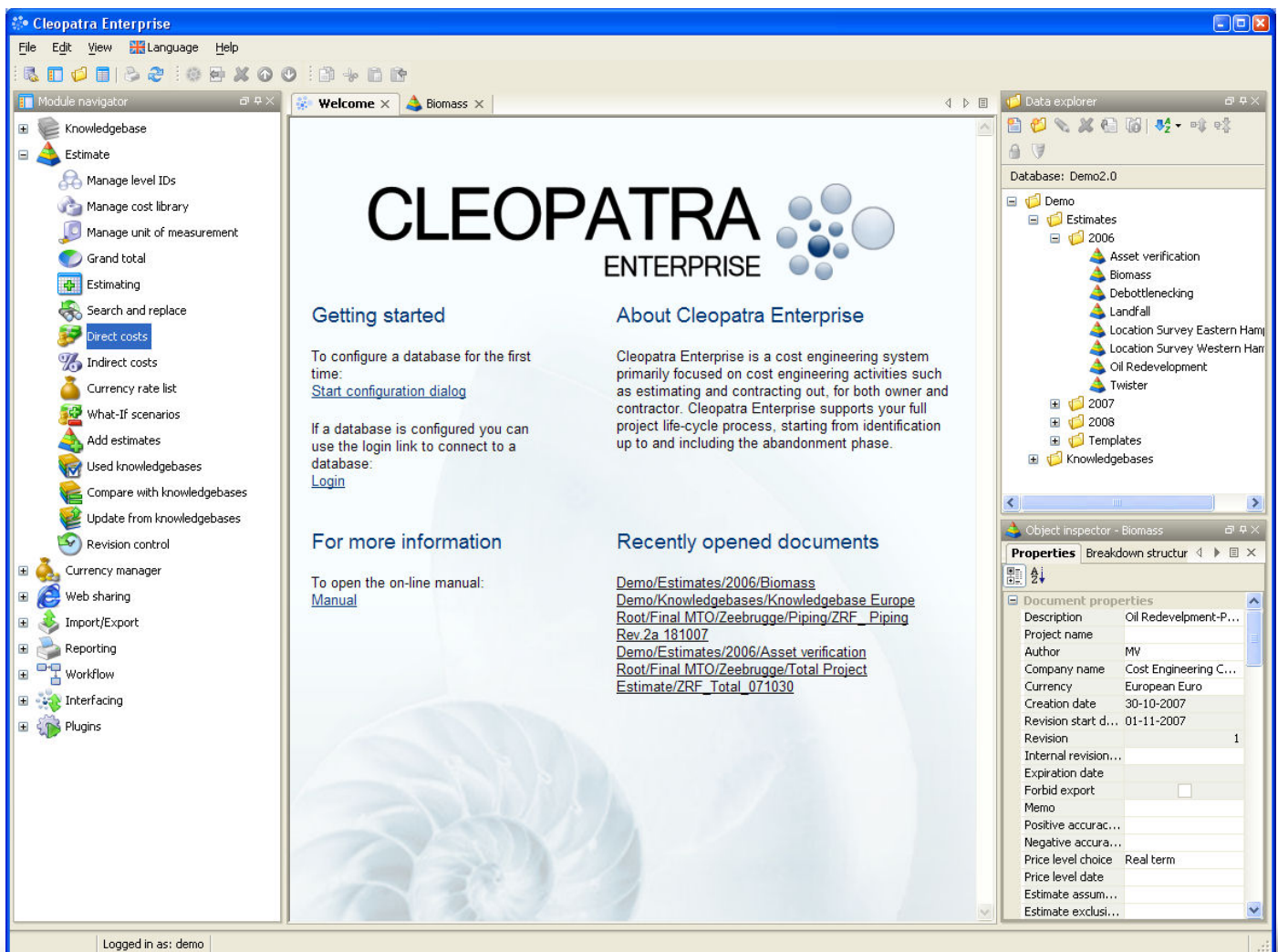
For a project to be successful, the full scope has to be finished in time and within budget. Cleopatra Enterprise can be your key to a successful project. Regardless of the size or type of project, Cleopatra Enterprise makes sure you hold all the cards.

Cleopatra Enterprise provides you with the cost engineering tools needed for the full project life cycle. From identification to abandonment, you can have a firm grip on the situation. The modular concept of Cleopatra Enterprise ensures you can tailor our software to become your perfect tool.

Cleopatra Enterprise can help you to make better management decisions through custom reports. It can assist you in managing and controlling your contracts better. It allows you to have a detailed insight in your cost information for EPC and maintenance projects. Cleopatra Enterprise can be used to make all kinds of estimates, from factor to detail. And if you need to prepare a bid, it can provide you with the information you need.

We have made sure that Cleopatra Enterprise is ready for your organization, by making it flexible and secure. In this way you can rely on its safe operation. Cleopatra Enterprise also offers easy interfacing. This guarantees that it can easily communicate with your CAD systems, or ERP and planning systems. And as organizations operate worldwide more and more, you can also share your work through the internet.

As you can see, Cleopatra Enterprise offers the best solutions to your cost engineering questions.



2 Common features



Common features

Due to its modular nature, Cleopatra Enterprise can be completely adapted to match your situation. However, Cleopatra Enterprise has a number of standard features that you can always take advantage of.



Reporting

You make your decisions based on the information available to you. With Cleopatra Enterprise you determine what you want to see. With our easy report generator, you can generate the reports you are looking for. There is no need to program. You can easily build reports when you need them. The reports are completely customizable including their layout. You can even use the built-in header and footer editor to make sure the reports fit your application perfectly.

To make sure you can use the reports in all possible situations, Cleopatra Enterprise can export to various file formats. Whether you want to build a PDF, prepare a HTML file for the internet or use it as an export to another software package, everything is possible.



Currency support

Projects are becoming more and more global. The possibility to compare projects on a worldwide scale has become common practice. Cleopatra Enterprise supports this trend by allowing you to use multiple currencies. You can define all exchange rates yourself and fix them or correct them as the project comes along. To determine costs the best way, the items used in your project can have differing base currencies, whereas the completed estimate is in an overall currency. This flexibility allows you to manage your cost to great detail.



Language support

In a global economy you will work with many nationalities and languages. Cleopatra Enterprise allows everyone to use the software in their own language. No separate installations are needed. If necessary, terms in the program can be translated to the wording used in your organization. This allows you to tailor Cleopatra Enterprise to your situation even more. Cleopatra Enterprise, a true worldwide solution which has been translated in different languages already. Even Chinese.



Easy deployment

The new networking technology in Cleopatra Enterprise makes it easy to install and easy to maintain. As the program and its database are installed on a single server, updates and changes will only need to be made once for all users. We want to make sure you can concentrate on your work, not on the software.



Migration support

Are you a current user of Cleopatra 5 or 6? Migrating will be easy. We have a team available to help you make the transition. And because we believe in the ease of migrating to Cleopatra Enterprise, we will convert your database for free.



Strong security

The security and privacy of your cost engineering knowledge is of vital importance. With Cleopatra Enterprise you are in control of access to both information as well as functionality. To ensure maximum flexibility Cleopatra Enterprise uses roles and workgroups which can easily be configured for the task at hand. This allows you to make sure Cleopatra Enterprise is used throughout your project, without the risks.

3 Estimating

Estimating

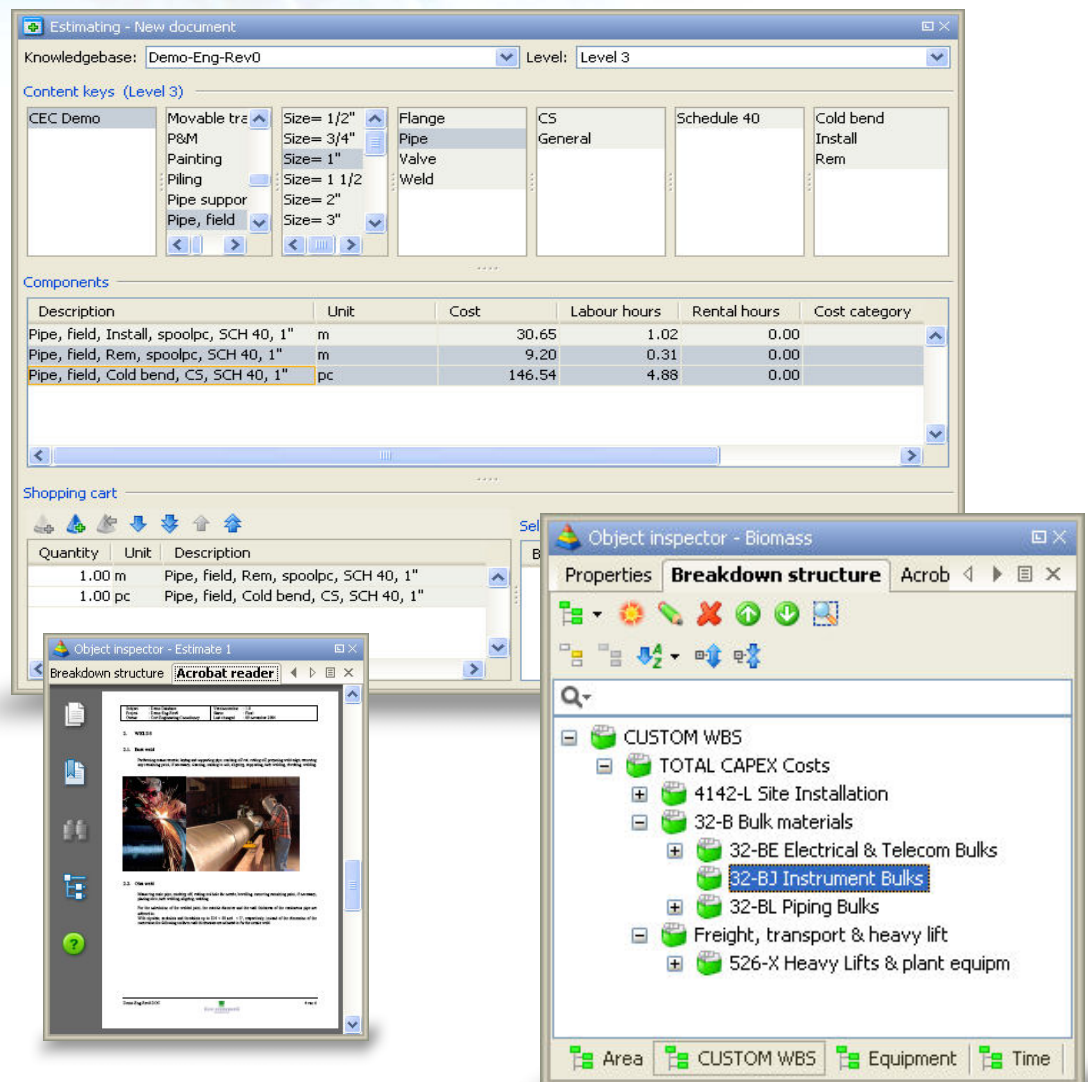
Creating a good estimate requires knowledge. Knowledge that you have acquired over the years. To ensure you make the best possible estimate for your projects, you need to use as much of that knowledge as you possibly can. Cleopatra Enterprise enables you to gather all your knowledge so you can use it when building your estimates.

Everything in Cleopatra Enterprise revolves around the central knowledge base. This is the database in which you can enter your knowledge. Or you can choose to work with standardized cost information. The choice is up to you, to allow you to make your best estimate for both EPC and maintenance projects.

Estimates in Cleopatra Enterprise are not just about the end figures. They are about sharing and interpreting information and using it for management decisions. For this reason you can customize the structure of your estimate in Cleopatra Enterprise. By defining your own hierarchy and break down structures, you can decide on the way your information is used and presented. You are able to embed different kinds of documents in your estimate to add clarification. And the clear overviews make it easy to obtain an overview of your current situation. All this allows you to make sure your estimates fit the practice of your company perfectly.

As a project can run for a long period of time and can be influenced by other economic factors, Cleopatra Enterprise offers the possibility to create scenarios. This way you can see what happens when certain costs rise or fall. Using this feature will allow you to prepare your reaction before instead of after the changes take place.

In short, the new estimating module of Cleopatra Enterprise allows you to make a better estimate quicker and keep a closer eye on what is going on within your projects.



Shopping cart

Description	Unit	Cost	Labour hours	Rental hours	Cost category
Pipe, field, Install, spoolpc, SCH 40, 1"	m	30.65	1.02	0.00	
Pipe, field, Rem, spoolpc, SCH 40, 1"	m	9.20	0.31	0.00	
Pipe, field, Cold bend, CS, SCH 40, 1"	pc	146.54	4.88	0.00	

Object inspector - Biomass

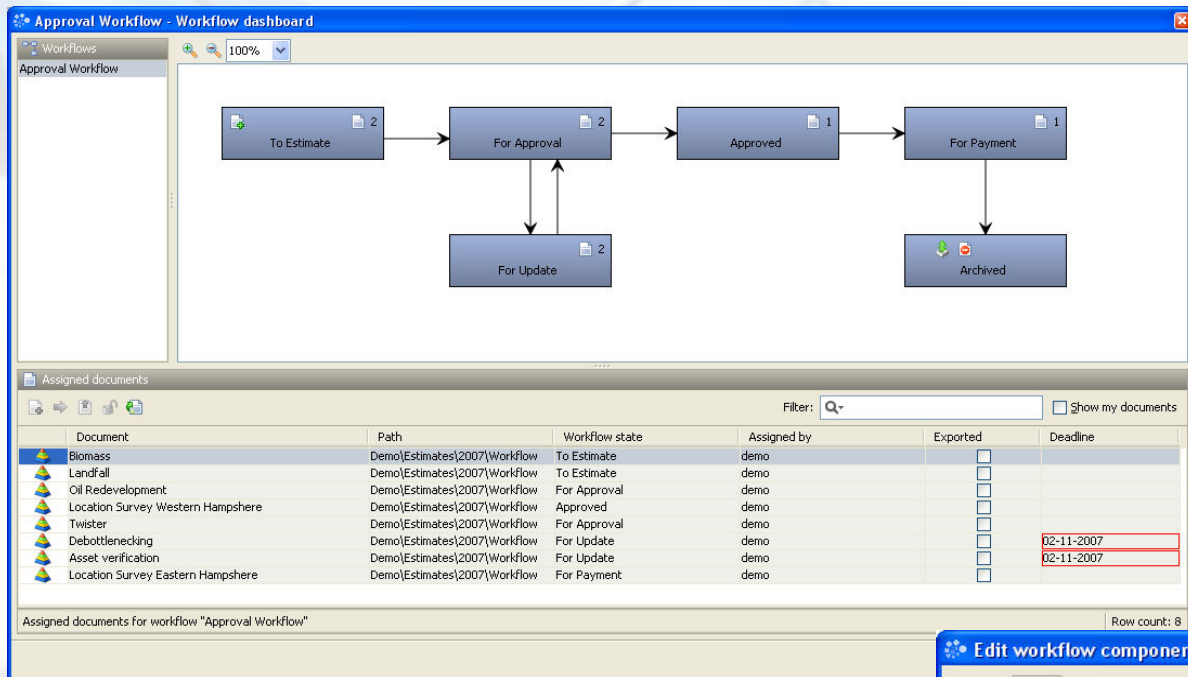
Properties Breakdown structure Acrobat

- CUSTOM WBS
 - TOTAL CAPEX Costs
 - 4142-L Site Installation
 - 32-B Bulk materials
 - 32-BE Electrical & Telecom Bulks
 - 32-BJ Instrument Bulks**
 - 32-BL Piping Bulks
 - Freight, transport & heavy lift
 - 526-X Heavy Lifts & plant equipm

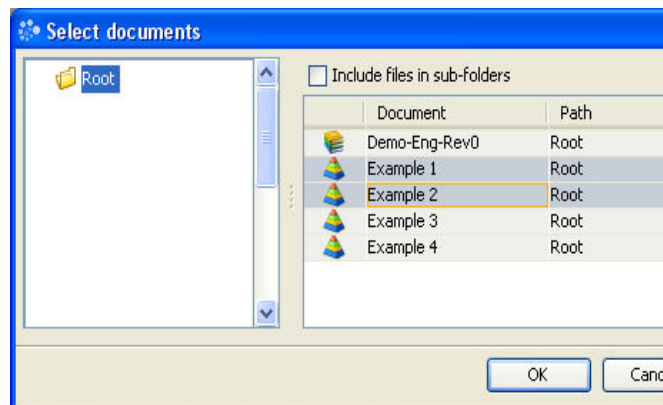
4 Workflow

Workflow

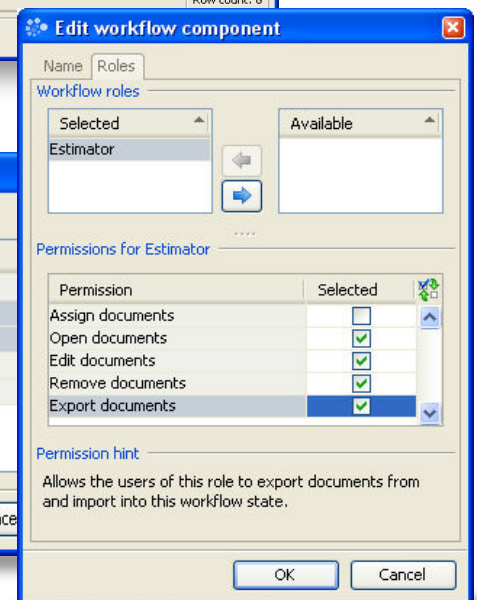
All documents around a project have to follow certain routes to inform others or to obtain approval. Now you are able to define that route in Cleopatra Enterprise. The workflow module for Cleopatra Enterprise is easy to configure and easy to use. The graphical interface allows you to quickly draw the routing. Making sure approval is given before the next step is taken, has never been this easy in cost engineering. The workflow procedures will allow you to closely monitor progress on every aspect of your project on your personal dashboard. From cost to documents, you have a complete overview whenever you want it.



Document	Path	Workflow state	Assigned by	Exported	Deadline
Biomass	Demo\Estimates\2007\Workflow	To Estimate	demo	<input type="checkbox"/>	
Landfall	Demo\Estimates\2007\Workflow	To Estimate	demo	<input type="checkbox"/>	
Oil Redevelopment	Demo\Estimates\2007\Workflow	For Approval	demo	<input type="checkbox"/>	
Location Survey Western Hampshire	Demo\Estimates\2007\Workflow	Approved	demo	<input type="checkbox"/>	
Twister	Demo\Estimates\2007\Workflow	For Approval	demo	<input type="checkbox"/>	
Debottlenecking	Demo\Estimates\2007\Workflow	For Update	demo	<input type="checkbox"/>	02-11-2007
Asset verification	Demo\Estimates\2007\Workflow	For Update	demo	<input type="checkbox"/>	02-11-2007
Location Survey Eastern Hampshire	Demo\Estimates\2007\Workflow	For Payment	demo	<input type="checkbox"/>	






Document	Path
Demo-Eng-Rev0	Root
Example 1	Root
Example 2	Root
Example 3	Root
Example 4	Root



Permission	Selected
Assign documents	<input type="checkbox"/>
Open documents	<input checked="" type="checkbox"/>
Edit documents	<input checked="" type="checkbox"/>
Remove documents	<input checked="" type="checkbox"/>
Export documents	<input checked="" type="checkbox"/>

Permission hint
 Allows the users of this role to export documents from and import into this workflow state.

-  Workflow
-  Workflow dashboard
-  Workflow designer

5 Interfacing

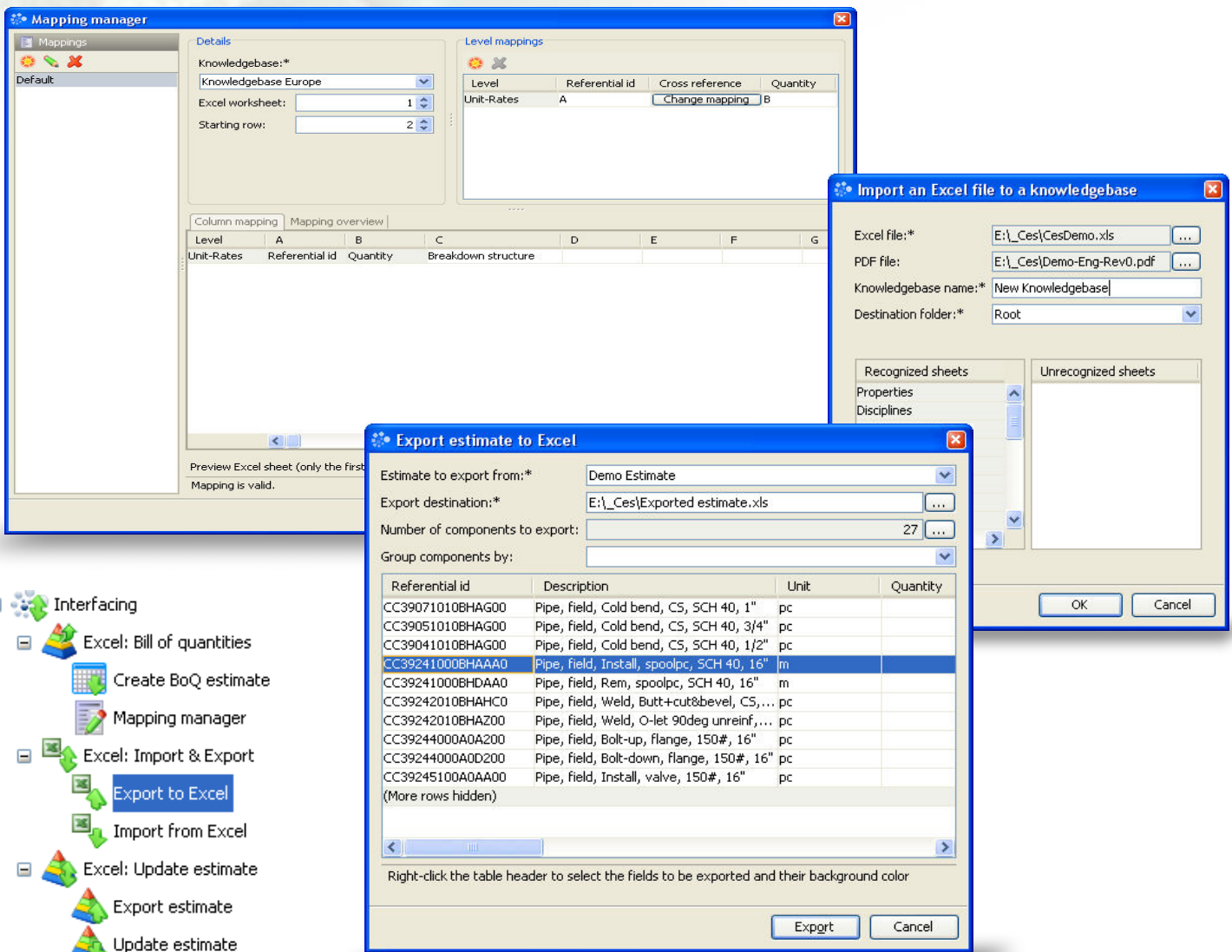
Interfacing

In cost engineering you need to get your information in from different sources. Or make information available for analysis to other programs. Cleopatra Enterprise makes this easier than ever. Through Cleopatra Enterprise's extensive interfacing possibilities, you can now import and export to different software solutions with ease.

In the past, hours have been spent transporting data from one application into the other. Days have been lost typing information into new software. Cleopatra Enterprise now has the ability to work directly with the results of other software. Direct imports of bills of quantities enable you to cut time to the first estimate dramatically. It also allows you to see your estimates change as the design changes. A great step forward in controlling your project made possible with a couple of mouse clicks.

To make the most of your current information, Cleopatra Enterprise offers the opportunity to import from Excel. This means your database can be filled quickly with all kinds of information retrieved from other applications. And if adaptations need to be made in future, the information can be easily exported as well. The advanced nature of the interfacing module also allows you to update your estimates. You can export your database, make your changes and import it into Cleopatra Enterprise again. This will then update your estimate.

Interfacing helps you make the most of the knowledge stored in your organization.



The screenshot displays three overlapping windows from the Cleopatra Enterprise software:

- Mapping manager:** Shows configuration for a knowledgebase named 'Europe'. It includes fields for 'Excel worksheet' (set to 1) and 'Starting row' (set to 2). A table shows a mapping from 'Unit-Rates' (Level A) to 'Change mapping' (Level B).
- Import an Excel file to a knowledgebase:** A dialog box for importing data. It specifies the 'Excel file' as 'E:_Ces\CesDemo.xls', the 'PDF file' as 'E:_Ces\Demo-Eng-Rev0.pdf', the 'Knowledgebase name' as 'New Knowledgebase', and the 'Destination folder' as 'Root'.
- Export estimate to Excel:** A dialog box for exporting data. It shows the 'Estimate to export from' as 'Demo Estimate' and the 'Export destination' as 'E:_Ces\Exported estimate.xls'. A table lists components to be exported:

Referential id	Description	Unit	Quantity
CC39071010BHAG00	Pipe, field, Cold bend, CS, SCH 40, 1"	pc	
CC39051010BHAG00	Pipe, field, Cold bend, CS, SCH 40, 3/4"	pc	
CC39041010BHAG00	Pipe, field, Cold bend, CS, SCH 40, 1/2"	pc	
CC39241000BHAAA0	Pipe, field, Install, spoolpc, SCH 40, 16"	m	
CC39241000BHAAA0	Pipe, field, Rem, spoolpc, SCH 40, 16"	m	
CC39242010BHAHCO	Pipe, field, Weld, Butt+cut&bevel, CS,...	pc	
CC39242010BHAZ00	Pipe, field, Weld, O-let 90deg unreinf, ...	pc	
CC39244000A0A200	Pipe, field, Bolt-up, flange, 150#, 16"	pc	
CC39244000A0D200	Pipe, field, Bolt-down, flange, 150#, 16"	pc	
CC39245100A0AA00	Pipe, field, Install, valve, 150#, 16"	pc	

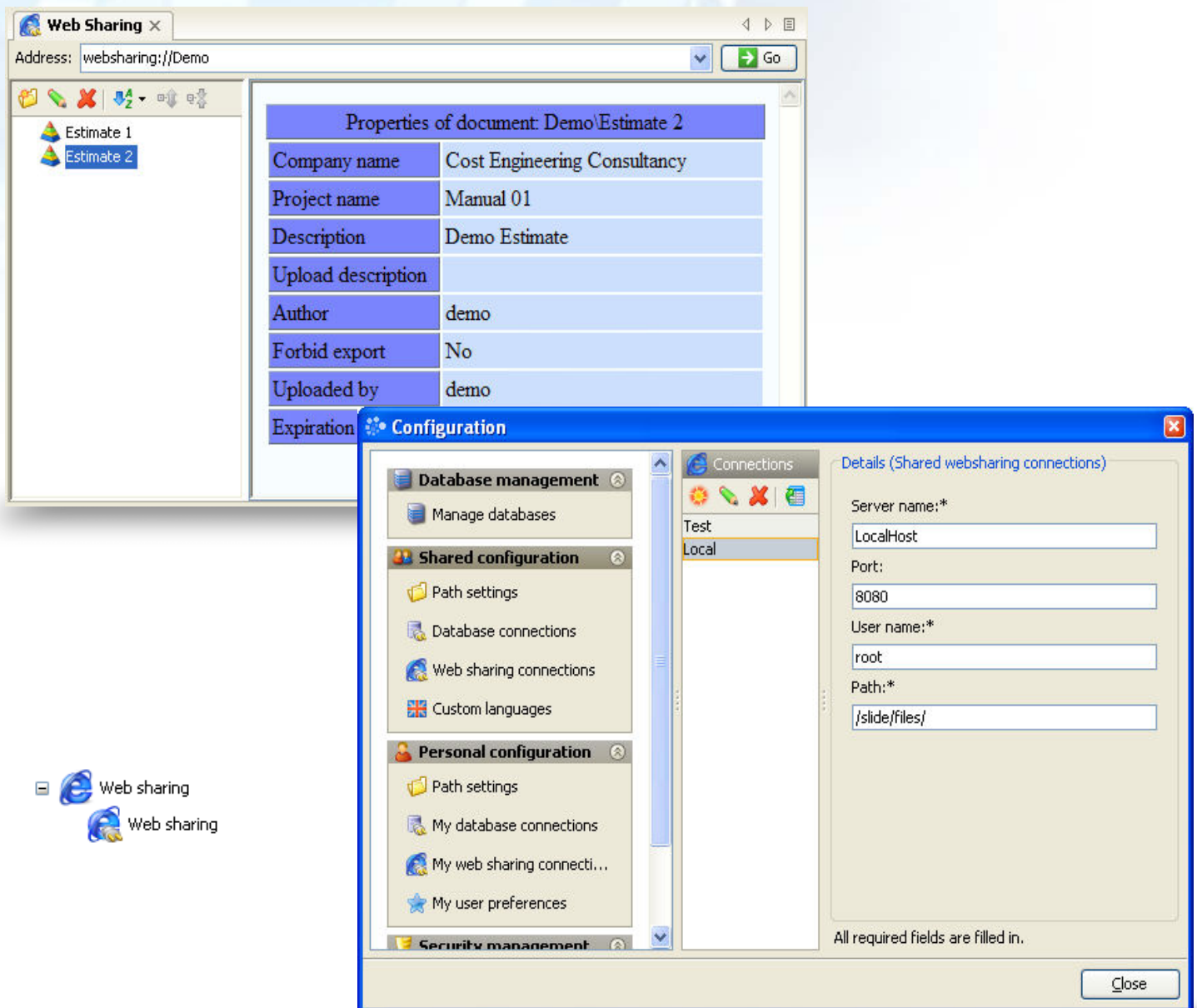
Below the table, there are 'Export' and 'Cancel' buttons.

- Interfacing
 - Excel: Bill of quantities
 - Create BoQ estimate
 - Mapping manager
 - Excel: Import & Export
 - Export to Excel
 - Import from Excel
 - Excel: Update estimate
 - Export estimate
 - Update estimate

6 Web sharing

Web sharing

As your organization runs projects on a global scale more and more, the need arises to be able to share your knowledge and information on that same global scale. Cleopatra Enterprise's web sharing module allows you this freedom. Share your cost data online and allow others to review it and interact with it in real time. When you share information this delicate over the internet, security is of utmost importance. For this reason Cleopatra Enterprise has been equipped with the latest technology in online authorization. Because your information needs to stay in your hands.

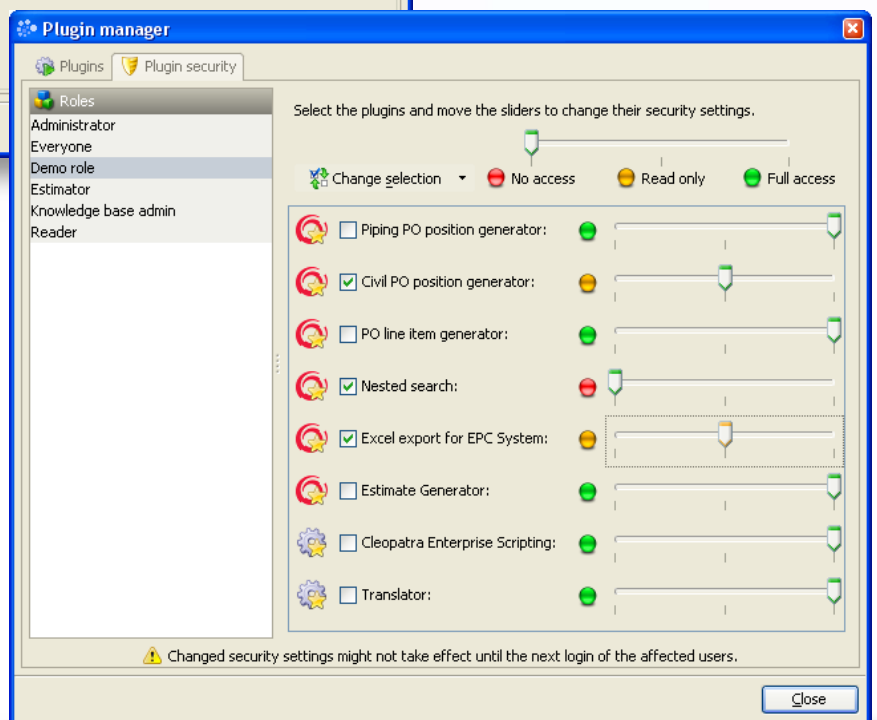
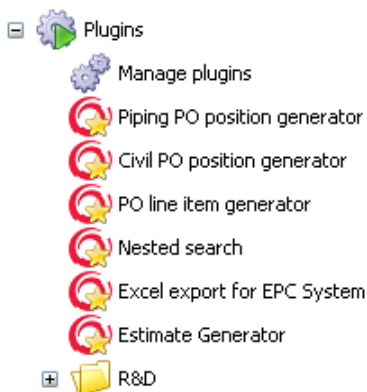
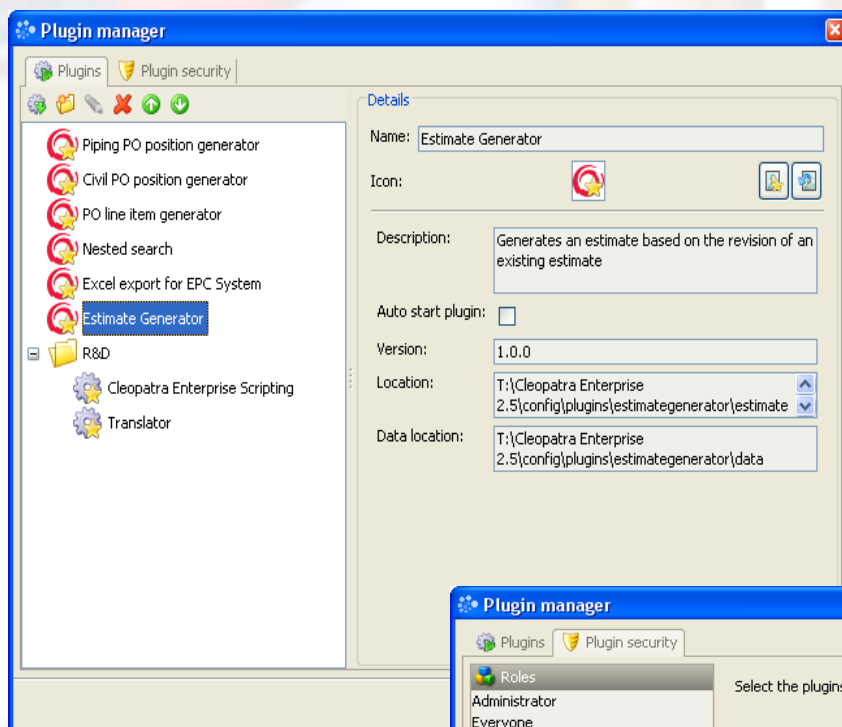


7 Plugins

Plugins

As a package Cleopatra Enterprise and its modules offer you unprecedented possibilities in cost engineering software. However, there might be situations in your organization or project that call for something even more out of the ordinary. For this reason, we have enabled the use of plugins in Cleopatra Enterprise.

A plugin is a module which is specifically created for your own application by our specialized team of consultants and programmers. Together we will determine the best way in which the plugin can be built to fit your organization best. After careful analysis of the situation a proposal will be made which will hold the specification for the plugin. This will then be realized for your application exclusively. This offers you the best balance between off the shelf and tailored software. Off the shelf where possible to lower maintenance and development costs. Tailor made where needed to enhance your efficiency.



8 Future modules

Future modules

Cleopatra Enterprise aims to support the cost engineering process during the full project life cycle. Cleopatra Enterprise offers a wide range of tools to cover all phases in the full project life cycle, from identification till abandonment, for any type of project. The current version already empowers cost engineers in a variety of ways to do their work more efficient with better quality, but in the near future we intend to add modules like Project Analysis, Factor Estimating and Contract Control to increase the tooling set of the cost engineer: Our software development are led by our cost engineering expertise and market demands. So if you are in the need for specific functionality to increase your efficiency or effectiveness in your work, feel free to contact us, we always welcome new ideas!



COST ENGINEERING

Cost Engineering
IJsselmeer 32e
3332 EX Zwijndrecht

PO Box 25
3330 AA Zwijndrecht
The Netherlands

Tel +31 (0)78 620 09 10
Fax +31 (0)78 620 91 42
www.CostEngineering.eu